



2019 IFAA WORLD BOWHUNTER

Event Details

- Website: wbhc2019.com
- Registration Fees:
 - Professional: \$400
 - Adult/Young Adult: \$150
 - Junior/Cub: \$100
- Dates: September 9-15, 2019
- Schedule:
 - Monday: Arrival
 - Tuesday: Round 1
 - Wednesday: Round 2
 - Thursday: Round 3
 - Friday: Round 4
 - Saturday: Awards Banquet
 - Sunday: Departure



Yankton: What a Discovery!



- Historic River City
- 15,000 Residents
- Territorial Capital from 1862-1883
- Recreational Opportunities
 - Hiking, Biking & Walking Trails that wind throughout the city.
 - Water Sports, Kayaking, Paddle Boarding, etc.
- Home of Tom Brokaw

Lewis & Clark Lake



- Beaches, boating, sailing, canoeing, kayaking, hobie cats, archery, fishing, etc.
- Full service resort.
- 871 campsites & a marina.
- Over 1.4 million annual visitors.

Hotels & Restaurants



- Kelly Inn (host hotel) located next door, for easy access to the facility.
- KOA Campground located on adjacent property.
- Additional hotels available within 15 minutes of facility.
- Over 55 area restaurants

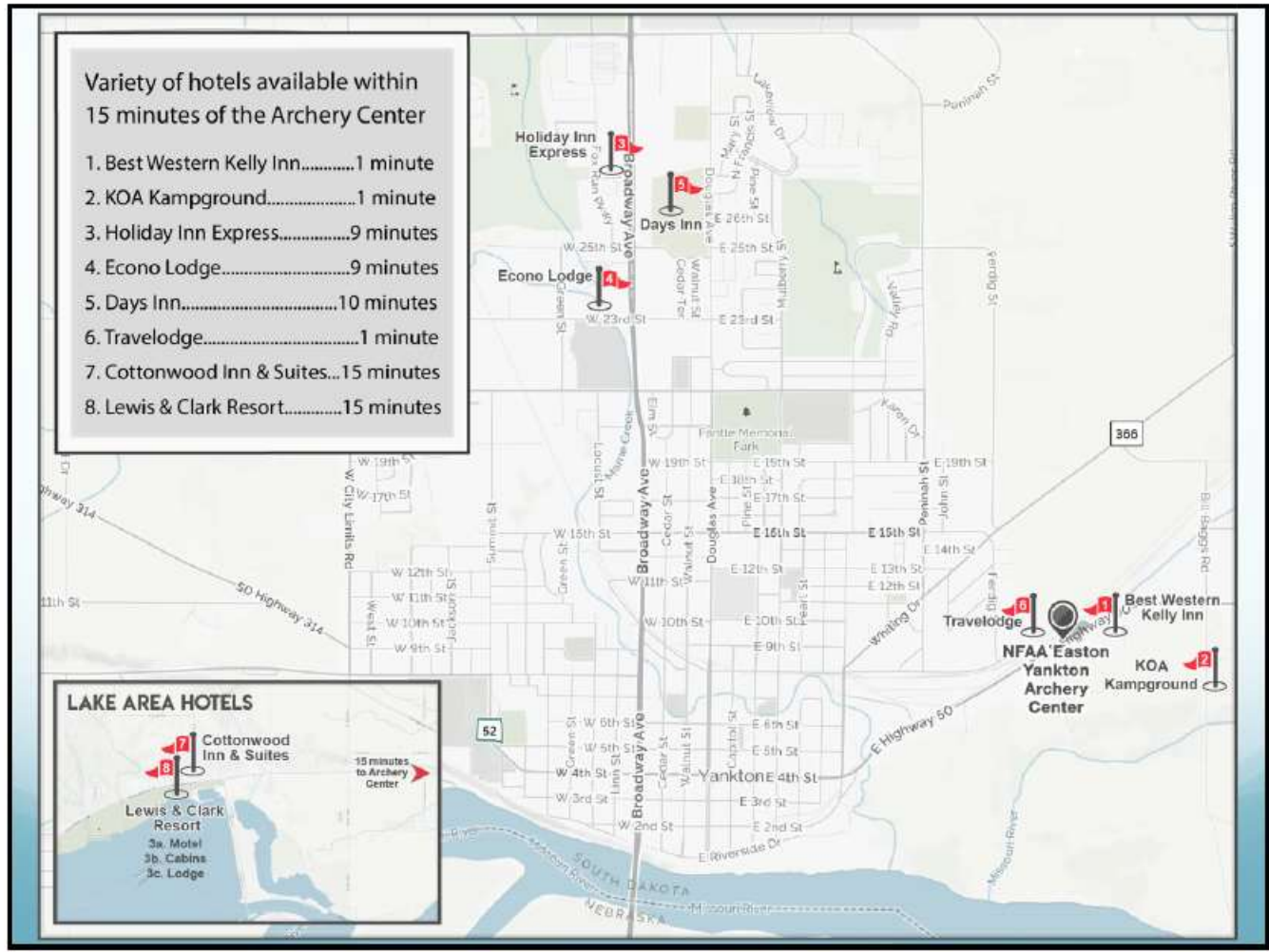
Variety of hotels available within 15 minutes of the Archery Center

1. Best Western Kelly Inn.....1 minute
2. KOA Kampground.....1 minute
3. Holiday Inn Express.....9 minutes
4. Econo Lodge.....9 minutes
5. Days Inn.....10 minutes
6. Travelodge.....1 minute
7. Cottonwood Inn & Suites...15 minutes
8. Lewis & Clark Resort.....15 minutes

LAKE AREA HOTELS

Cottonwood Inn & Suites
 Lewis & Clark Resort
 3a. Motel
 3b. Cabins
 3c. Lodge

15 minutes to Archery Center



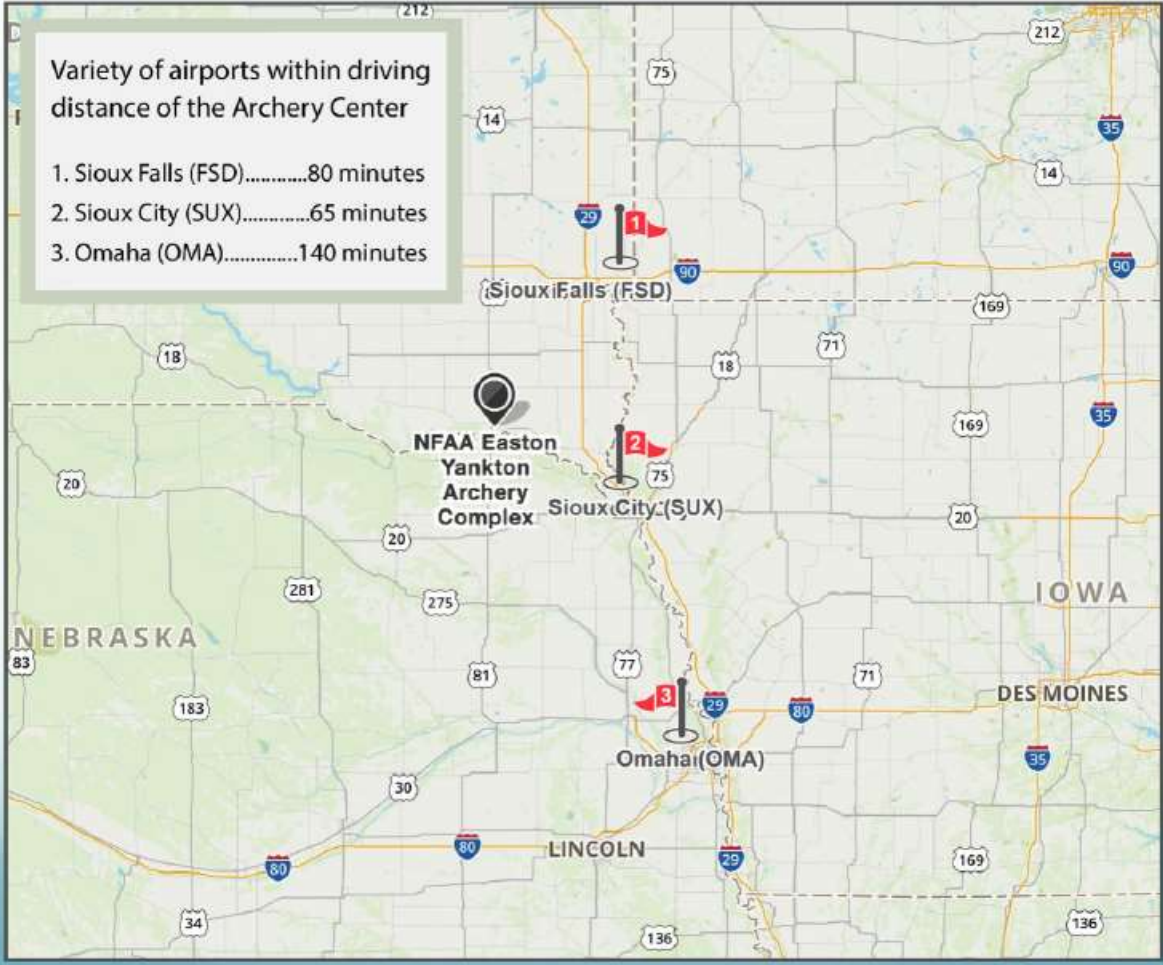
Convenient Location



- Situated between 3 major airports:
 - Sioux City
 - Sioux Falls
 - Omaha
- Easy access to I-29
 - Hwy 50 is a 70mph four lane expressway to I-29
- Great access North and South
 - Hwy 81

Variety of airports within driving distance of the Archery Center

- 1. Sioux Falls (FSD).....80 minutes
- 2. Sioux City (SUX).....65 minutes
- 3. Omaha (OMA).....140 minutes



NFAA Easton Yankton Archery Center



- Headquarters of the National Field Archery Association
- Situated on over 100 acres
- 90M Indoor Range
- 2 Olympic Fields
- 3 28-Target Field/3D Courses
- 3D Practice Field





NEYAC Events:



- NFAA National Championships
 - Field, Unmarked 3D, Target
- IFAA World Field, Indoor, & Bowhunter
- World Archery Youth Championships
- US Collegiate Archery National Indoor
- US Collegiate Archery World Championship Qualifier
- SD State Indoor & Outdoor
- Midwest Indoor & Outdoor Sectionals
- SD State NASP
- Rinehart 100
- Ted Nugent Kamp 4 Kids
- Adult & Youth Compound Academies
- Upcoming:
 - 2018 World Archery Indoor Championships
 - 2020 World Archery Field Championships

Annual Tournaments:



- First Dakota Archery Classic
 - 40-50-60 YD Indoor Shoot (600 Round)
- NFAA Outdoor Target Nationals
 - 40-50-60 YD Outdoor Shoot (600 & 900 Rounds)



Mount Marty College



- Catholic Benedictine Liberal Arts College
- 550 Local Students-1,172 at all Locations
- Strong Healthcare & Business Departments
- Dorm rooms used for housing various National & World Championships participants

Questions?

